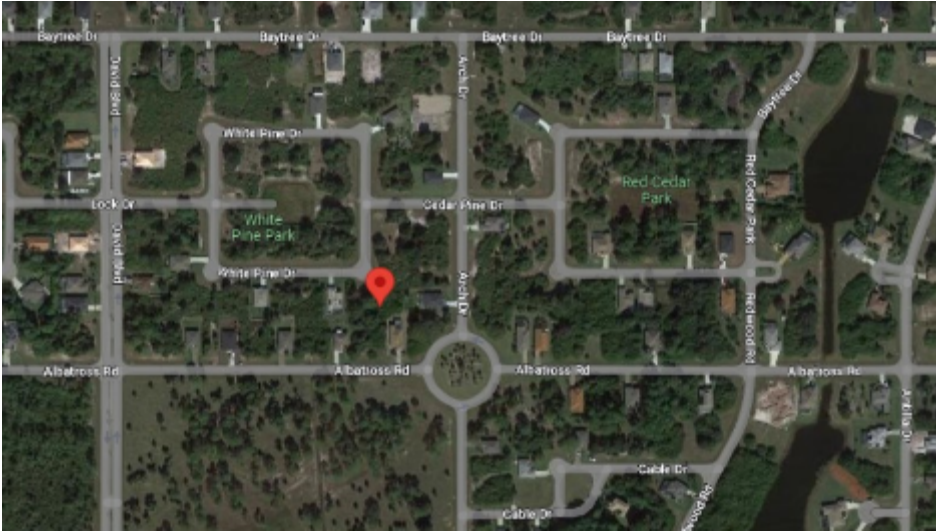


## Florida Land Plot Investment

**\$27,500.00**  
**Net Yield 0 % p/a**



### Property details

Property ID	OPFLRO728
Lot size	9451 sq ft

### Investment Details

Property Taxes	\$36.25 p/m
HOA	\$8.00 p/m
Net Yield	\$0.00 p/a
Net Yield	0 % p/a

Florida Land parcel of 9,451 sq ft with opportunity to construct a single family home of 1,850 sq ft with a pool.  
Area is set up with public water, sewer and all other utilities except natural gas.  
A short distance to the inter-coastal, public beaches, boating marinas, and some of the best fishing in the world.  
A fantastic opportunity to own your own piece of Florida.

**Price per Square Meter** ★★☆☆☆

**Rental Yield** ★★☆☆☆

**Payback** ★★☆☆☆




## KNOW OUR OFFICES AROUND THE WORLD


**OPISAS HOLDING INC. HEAD OFFICE**  
217 N. WESTMONTE DR STE 2018  
ALTAMONTE SPRINGS,  
FLORIDA 32714 USA


 +1 (407)6072461


 +55 11 3280 1530

 +39 02 871 882 30

## OPISAS CONTACTS

 +57 (321) 369 0364

 +52 (1) 311 690 3162

 +386 70 475 476

[REQUEST MORE INFORMATION](#)

[INFO@OPISAS.COM](mailto:INFO@OPISAS.COM)

All prices on this list are subject to change without notice. Whilst we make every effort to provide you the most accurate, up to date information, occasionally on our website or other marketing material, values detailed may vary. In the event a Property is listed at an incorrect price, OPISAS shall have the right to refuse any reservations at the incorrect or outdated price OPISAS does not accept liability for any errors or omissions. The information herein is intended to provide accurate data and facts with regard to the proposal in question. Information is also provided with the understanding that OPISAS do not provide legal activities, accounting, financial or other professional services that would otherwise be regulated by any financial professional regulatory institution. OPISAS disclaim any liability, personal risk or loss or otherwise, incurred as a result of directly or indirect use and application of any content of this document.